



Brenna

HTW-07-B-C

WATER
FILTRATION
DEVICE

Before operating the unit, please read this manual thoroughly,
and retain it for future reference.

Hi-Tech Sweet Water Technologies Pvt. Ltd.

Mkt. Off.: SURAT: Tel.: +91-261-3056779/3053079 • Fax: +91-261-2234907

HO Off.: BARDOLI: Tel.: +91-2622-222755/224726 • Fax: +91-2622-227315

Branches

AHMEDABAD: +91 99740 15848 • ANAND: +91 99740 15850 • BARODA: +91 99740 15851 • BHARUCH: +91 99740 15852
• DHULE: +91-2562-272544 • KAMREJ: +91 99740 15846 • MUMBAI: +91-22-28756109
• NADIAD: +91 99740 15854 • NANDURBAR: +91-2564-229087 • NASHIK: +91-253-2597249 • NAVSARI: +91 99740 15853
• PETLAD: +91 99740 15855 • UMRETH: +91 99740 15856 • VALSAD: +91 98980 47609 • VAPI: +91 99740 15857

CONTACT:

Gujarat - +91 98980 47820, +91 98980 22557 • Rajasthan - +91 98290 45702

Maharashtra - +91 94227 87933 • Delhi - +91 98732 84950, +91 93502 79005

M.P. - +91 98933 19311 • Chennai - +91 94437 48700, +91-44-30958788 • Andhra - +91 93464 99778

email: info@hitechro.net • Visit us at www.hitechro.net

**Owner's
Instructions**





CONTENTS

CONTENTS	01
SAFETY INFORMATION	02
PARTS NAME	04
- Front / Rear	04
FEATURES	04
WATER FILTRATION PROCESS	05
- Brenna (HTW-07-B-C)	05
INSTALLATION	05
HOW TO USE	06
- To Drink Room Water	06
- To Perform the Continuous Extraction	06
FILTER REPLACEMENT	07
- Filter Replacement Cycle	07
- Filter Replacement Method	07
SPECIFICATION	09
OUR NETWORK	10



SAFETY INFORMATION

▲ Danger: If not observed, serious injury or even death may occur as a result.

- Do not use a damaged power plug or a loose electric outlet. (Brenna only)
Electric shock or fire may occur as a result.
- Do not pull the power cord or touch the power plug with a wet hand. (Brenna only)
Electric shock or fire may occur as a result.
- Do not forcefully bend the power cord or put it under a heavy object to prevent it from being damaged or deformed. (Brenna only)
Otherwise electric shock or fire may occur as a result.
- If the power cord is wet, unplug the unit and let it completely dry before subsequent use.
Otherwise, electric shock or fire may occur as a result.
- Unplug the product before repair, inspection, or parts replacement. (Brenna only)
Otherwise, electric shock may occur as a result.
- Do not plug into an outlet that is being used by several other appliances. Use an electrical outlet dedicated. (Brenna only)
Otherwise, fire may occur as a result.
- When you don't use for a long time, close the main water supply valve and unplug. (Brenna only)
Otherwise, electric shock or fire may occur as a result.
- Do not attempt to repair the power cord.
- Do not connect and pull out the power plug repeatedly. (Brenna only)
Otherwise, electric shock or fire may occur as a result.
- Remove any dust or water off in the pin and contacts of the power plug. (Brenna only)
An electric shock or fire may occur as a result.
- In the case the power cord is damaged, do not replace the cord yourself. Call Hi-Tech Service Center to have it replaced. (Brenna only)
Otherwise, electric shock or fire may occur as a result.
- Do not install near a heating device.
Otherwise, fire may occur as a result.
- When the water is coming inside of the product or there is a puddle on the product, call Service Center after closing the supplying valve and unplugging. (Brenna only)
Otherwise, electric shock may occur as a result.
- Do not put the candle, a light for cigarette on the products.
Otherwise, fire may occur as a result.
- If our product produces a strange noise or odd smell, immediately unplug from the electrical outlet and call our Service Center. (Brenna only)
Otherwise, electric shock may occur as a result.
- Do not place any containers with water, medicine, food, small metallic objects, or any flammable material on the top of the product.
In the case foreign material gets inside the product, electric shock, fire, product damage may occur as a result.
- Clean after unplugging, and don't clean by spraying the water directly or don't wipe the product using the benzene and thinner.
Otherwise, electric shock or fire may occur as a result.
- Do not move the product by pulling the power cord. (Brenna only)
Otherwise, electric shock or fire may occur as a result.



SAFETY INFORMATION

- Do not open, repair, or modify the unit. (Brenna only)
Otherwise, electric shock or product damage may occur as a result.

▲ Warning: If not observed, serious physical injury or property damage may occur as a result.

- Do not install the product on a sloped floor.
- Do not press the product by constraint or impact.
Injury to the user or damage to the unit may result.

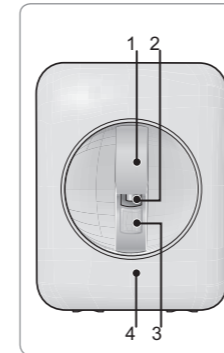
▲ Caution: If not observed, minor physical injury or property damage may occur as a result.

- Use after closing the water tank cover completely inside of the product.
The buck or the foreign body can be entered.
- To drink the clean water, change the filter according to the filter replacement cycle.
If you use the expired filter, the filter performance is lowered.
- The black particle can be survived on the bottom of the inner water tank after moving the product or replacing the post carbon block filter.
As the powder of the active carbon used in the Post carbon block filter was flowed out for making the purified water taste better, it is harmless to the body.
- When you don't use for a long time, use after draining the saved water completely and emptying the newly purified water once again.
The saved water can be polluted.
- Do not use the purified water for changing the water in the fish ball, aquarium.
- Do not turn by gripping the purified water extraction faucet or do not lift the product using the faucet.
Otherwise, leakage or product damage may occur as a result.

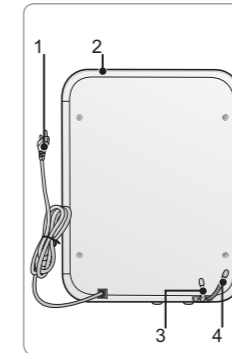


PARTS NAME

Front / Rear



- 1 Sliding lever
- 2 Extraction faucet
- 3 Cup-touch lever
- 4 Front cover



- 1 Power cord
- 2 Top cover
- 3 Main water Inlet hose (Orange)
- 4 Daily life water outlet hose (Blue) (Brenna, P-07QL)



FEATURES

Sliding Lever

If you push the cup-touch lever and let down the sliding lever, the cup-touch lever is fixed and the continuous extraction can be performed.

Uniform water pressure keeping function

It supplies the main water with the uniform water pressure from the region with the high water pressure and protects the inside of the product from the high water pressure.

Sealed water tank for the second pollution prevention

To prevent the second pollution due to the penetration of the dust, bug, and other foreign body, improve the sanitary by applying the extra sealed structure to the inner water tank

Antibacterial system inside of the water tank

It suppressed the microbe growths using the ceramic filter.



WATER FILTRATION PROCESS

Brenna (HTW-07-B-C)

1. Step 2 : Neo-sense filter

This Neo-Sense filter has the functions to remove particulates, dissolved organic and inorganic impurities. It also has the function to remove chlorine, volatile organic compounds(VOC's).

Step 3 : Membrane filter (RO)

RO membrane filter has the function to remove water contaminants such as heavy metals, waterborne microorganisms and harmful organic chemicals etc.
The water concentrated the harmful material is flowed out through the daily life water hose as the daily life water.

Step 4 : Post-carbon block filter

This post-carbon block filter has the functions to remove smell induction material and fine particles or dust and to improve taste of water.

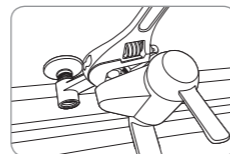
Step 5 : Ceramic filter

This ceramic filter has the function to control microorganism propagation in water.



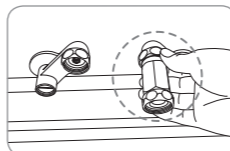
INSTALLATION

1. Close main water supply valve to separate the faucet.



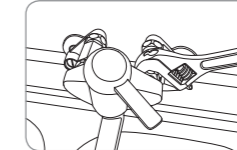
2. Wind the Teflon tape on the adaptor and fit it to the pipe.

▲ Do not turn the water pipe.



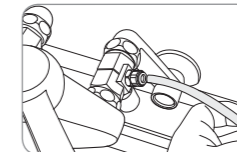
3. Connect the faucet with the adaptor.

▲ Shall install the adaptor with connector on the cold water pipe.

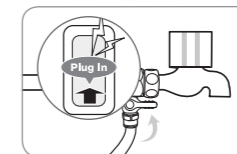


4. Connect 1/4 inch orange tubing with the connector on the adaptor.

▲ Flush water through each filter at least 5 minutes before Connection.



5. Connect the voltage rating that matches it on the rating plate. Then, open the feed valve to supply water to the filtration system.

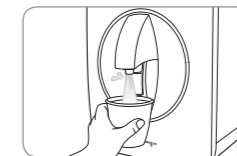


HOW TO USE



To Drink Room Water

If you push the cup-touch lever, you can drink the purified water.



To Perform the Continuous Extraction

If you push the cup-touch lever and let down the sliding lever, the cup-touch lever is fixed and the continuous extraction can be performed.



FILTER REPLACEMENT

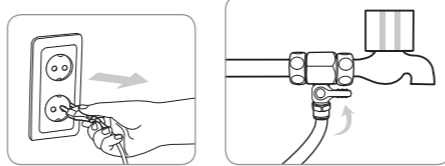
Filter Replacement Cycle

The filter replacement cycle described above is not the filter quality warranty period but the expected cycle (life) that the filter shows its original performance. (Based on the tap water) Therefore, the filter change cycle may be reduced for the area with poor water quality or more applications.

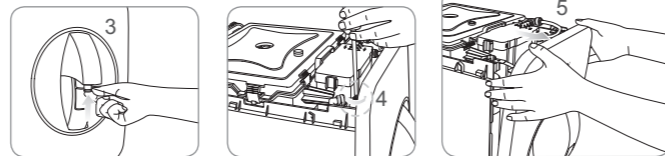
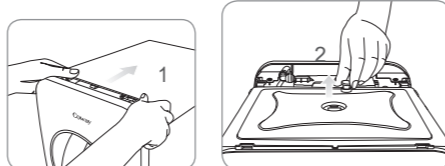
Brenna, P-07QL		P-07QU	
Filter name	Usable Period	Filter name	Usable Period
Neo-sense filter	6 months	Neo-sense filter	6 months
Membrane filter (RO)	24 months	Post-Carbon bloc filter	18 months
Post-Carbon bloc filter	18 months	Membrane filter (UF)	12 months
Ceramic filter	12 months	Ceramic filter	12 months

Filter Replacement Method

1. After pulling the power cord necessarily (Brenna only), close the main water supply valve and drain the water inside of the water purifier completely (See P.7).

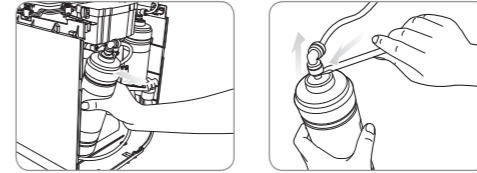


2. Please separate the top cover and the front cover. (After blocking the main water extraction hole using the faucet stopper in the top of the inner water tank and loosening a screw with a driver, separate it.)



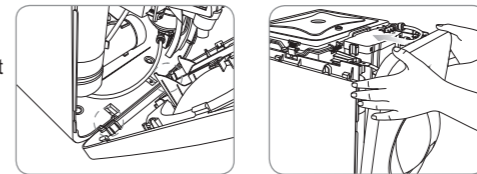
- Tips**
- Don't push the cup-touch lever with the excessive force.
 - Product damage may occur as a result.

3. Separate the fitting connected to the filter to replace and then replace the filter. (Separate the fitting using an appropriate tool.)



- Tips**
- By changing the filter and connecting the fitting and the hose precisely, check that there is no leakage and drain the first purified water necessarily.

4. After closing with fitting the groove in the front cover well, drop the cup-touch lever and the sliding front deco. Plug in the faucet stopper blocked the faucet again in place and close the top cover.



- Tips**
- ▲ Use the new filter after cleaning.
 - Neo sense filter: Install after cleaning with the main water for about 3 minutes.
 - Post-Carbon block filter: Install after cleaning with the water passed the Neo sense filter for about 3 minutes.
 - Membrane filter: Install after cleaning with the water passed the Neo sense filter for about 3 minutes.



SPECIFICATION



Specification

Product Name	Water Filtration Device
Model	Brenna
Purified Method	Reverse Osmosis
Rated Voltage	220 V – 240 V~ 50/60 Hz
Power Consumption	16 W
Tank Capacity	6.5 L
Dimension	304 mm (Width) × 409 mm (Depth) × 404 mm (Height)
Net Weight	7.5 kg
Working Pressure	69 kPa – 827 kPa
Working Temperature	5 °C - 35 °C (41 °C - 95 °C)

Without any prior notice, all or parts of the product are subject to change for the purpose of improving the performance of the product.



OUR NETWORK

